

Harnessing the power of data - veterinary perspective

Jenny Frössling

23 April 2024

Department of epidemiology, surveillance and risk assessment, Swedish Veterinary Agency



Photo: Boys in Bristol Photography



Photo: Barry Skeates



Starting point

Collecting data in disease control programme

Tuberkulinundersökning			Djur- antal	Resultat		Bekost- nad	Mejeri- intyg	Nästa undersökn.		A n m .	
D-nr	År	Dato		F	R			Månad	År		
71	1947	10/10	10	10	-	S	/				
49	49	21/10	10	10	-	S	/				
51	51	28/10	10	10	-	S	/	Oket.	53		
43	53	23/10	13	10+32	-	S	31/10	Oket.	56	fuf. kenta.	
41	54	8/5	13	13	-	S	14/5	maj	57	Avrån +	
33	57	21/5	17	17	-	S	31/5	Maj	60		
87	59	21/11	17	17	-	S	/			Avrån +	
	63	15/2	19	19	-	S	/			Avrån +	
	66	18/11	22	22	-	E	/				
Postadress: Floby Tel. 44024			Mejeri: Floby		Lev.-nr: 361						
JAN.	FEER.	MARS	APRIL	MAJ	JUNI	JULI	AUG.	SEPT.	OKT.	NOV.	DEC.
Ägare: Carlsson Georg			Gård: Tokatorp		Socken: Ullene 45						

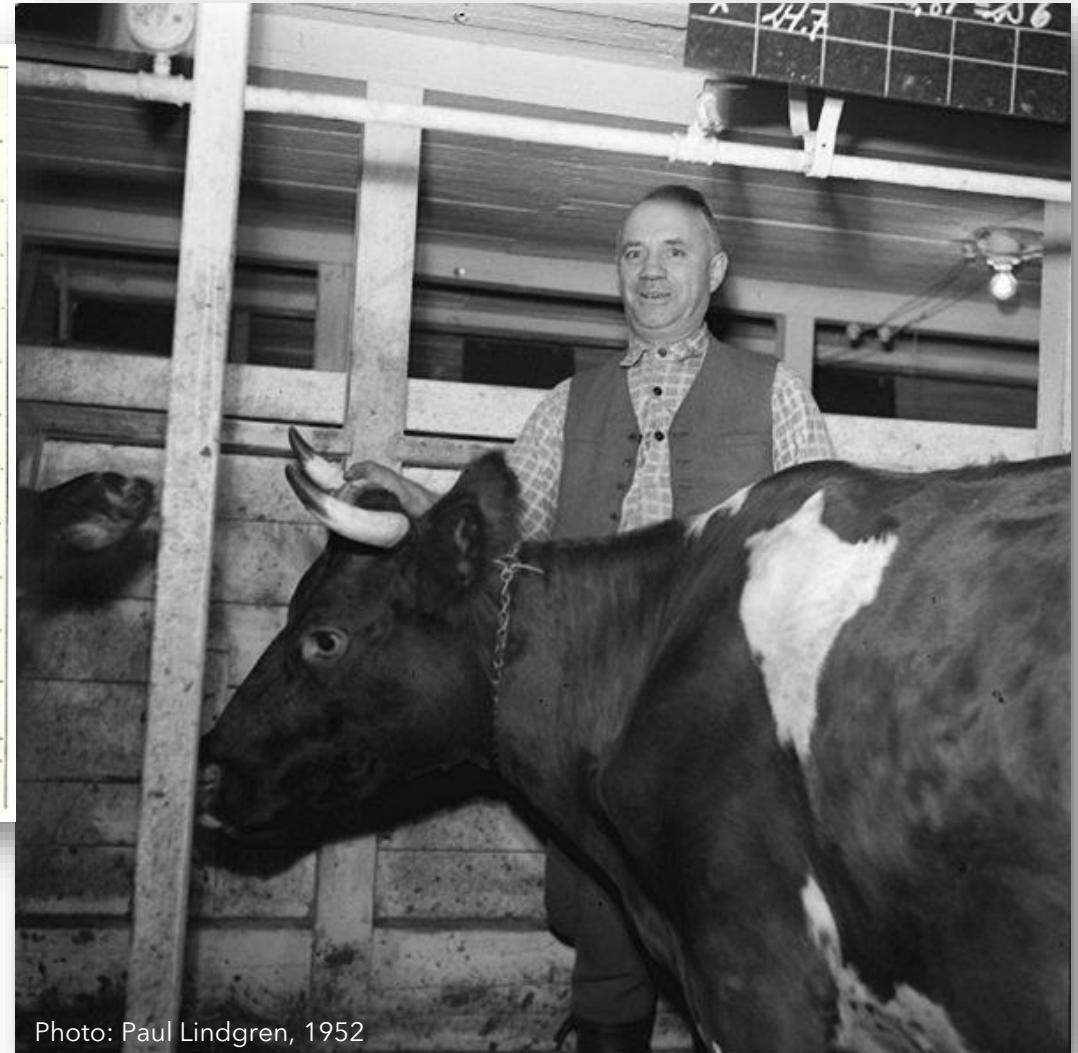
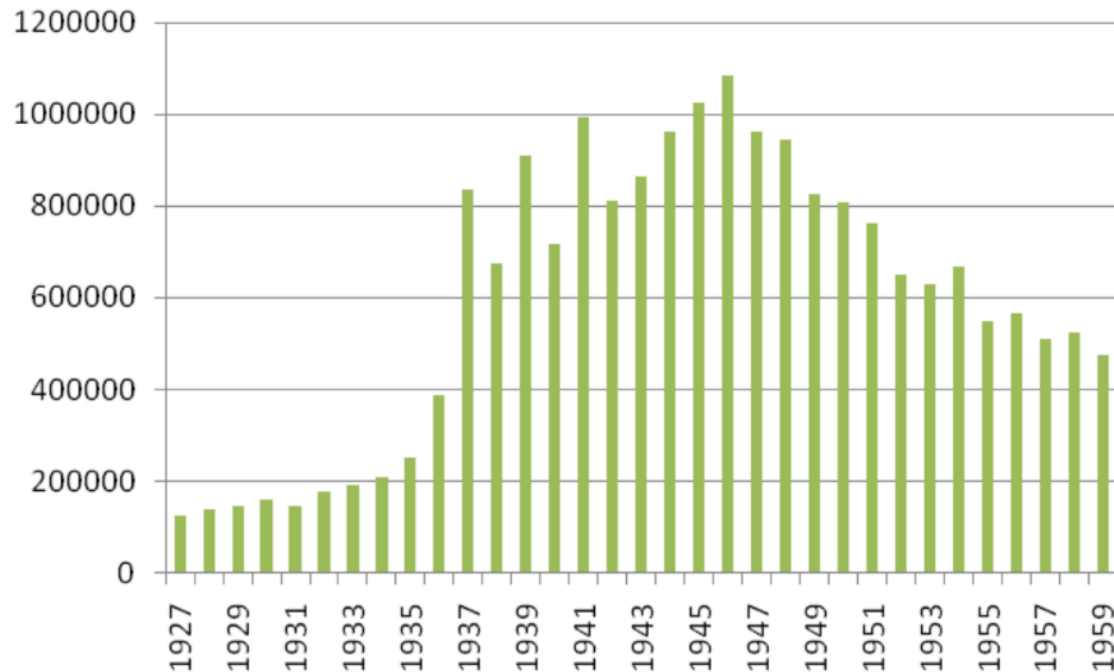


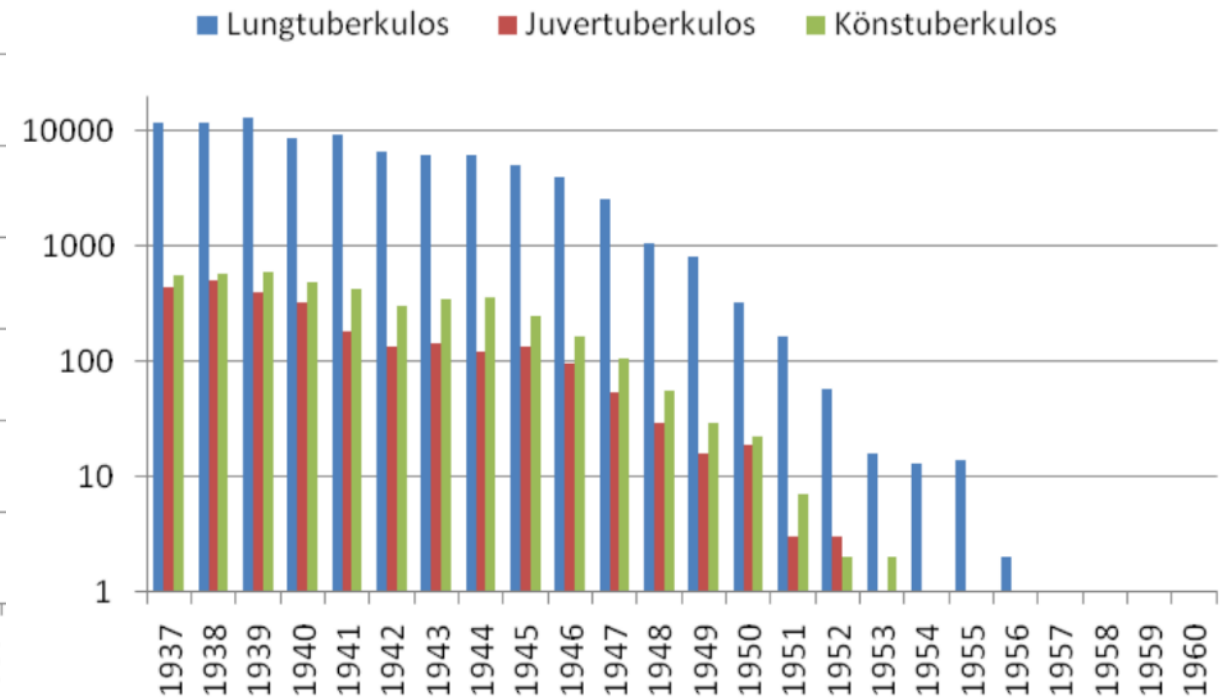
Photo: Paul Lindgren, 1952

Visualisation of data to follow up on results

Tuberculin testing in cattle



Cases of tuberculosis in cattle





Contrasting conditions/trends



NOVA

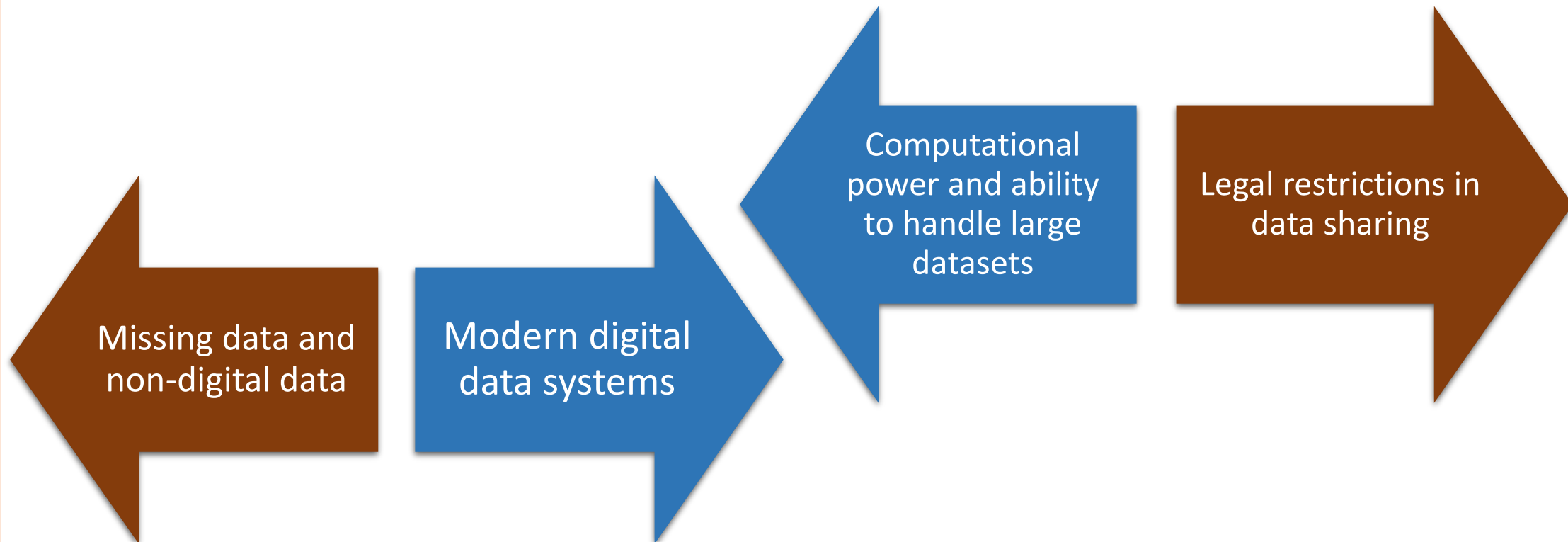
Novel approaches
for design and evaluation
of cost-effective surveillance
across the food chain



Selected Outputs and Outcomes

Data availability and access

- Difficulty to share data, also between authorities in the same MS
- Imbalance in data and data access



Contrast 1

- High tech, sensors, robots
- Data from machines/equipment
- Machine learning/AI

- Still basic
- Biological, live animals, individuals
- Rural, sometimes remote



DeLaval VMS™ mjölkrobotar

DeLaval VMS™ handlar om att göra robotmjölkning mer personligt. Mer precist. Mer lönsamt.

Med två modeller i VMS™ serien, så kan vi behandla varje gård, varje mjölkproducent, varje ko, till och med varje spene - individuellt - och samtidigt hjälpa dig att skapa en bättre plats att vara på för anställda, kor, dig och din familj.

Läs mer →



Pig Health Assessment Based on Applied Sensors – Smart Pig Health



Photo: Iain Thompson

Contrast 2

- Big initiatives
- Multinational databases and platforms
- Large databases, big data
- Detailed data, down to the genome



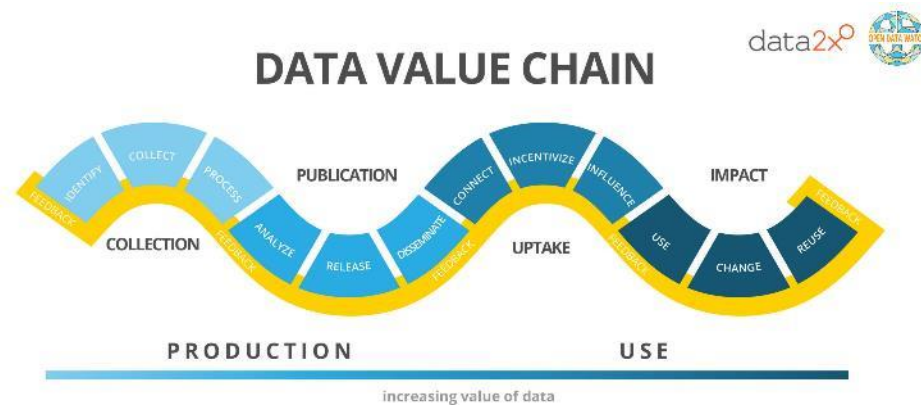
<https://webbshop.kottforetagen.se/product/31145>

- Small/simple tools
- Analogue solutions still in use (stable log/overview), non-digital data
- Local solutions
- Missing information and poor registering

Contrast 3

- Open data
- FAIR data
- Willingness to share

“But data are inherently a public good. Once they have been produced they can be used and reused at little cost, generating value each time. And so, our goal should be to use and reuse data to their maximum effect.” *Open Data Watch*



- Uncertainties about legislation, GDPR
- Data security demands
- Worry that data will be misunderstood, misused, fear of journalists, activists, threats, bad reputation

Göteborgs-Posten

Nyheter Göteborg Sport Ekonomi Kultur Ledare Debatt

Bondens dotter, 7: ”De säger att de kanske ska döda mamma”

Nattliga inbrott, telefonsamtal med dödshot och okända personer i djurmarsk sk



Animal Rights Activists Remain a Serious Threat to Your Farm

by Eric Pfeiffer | January 3, 2024

<https://www.gp.se/nyheter/gp-granskar/bondens-dotter-7-de-sager-att-de-kanske-ska-doda-mamma.c2e3bc00-7f97-4d4c-8f70-ac94439ea2f1>
Vegan activists 'threatening' farmers - BBC News, 29 jan 2018 <https://www.youtube.com/watch?v=rLBvU8sSWw>
<https://www.hoosieragtoday.com/2024/01/03/animal-rights-activists-remain-a-serious-threat-to-your-farm/>



Data owner and data user



Data-driven control and prioritisation of non-EU-regulated contagious animal diseases

ONGOING PROJECT

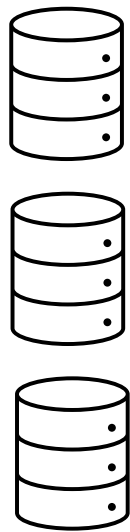


Photos: SVA



Integration of data tools

DATA



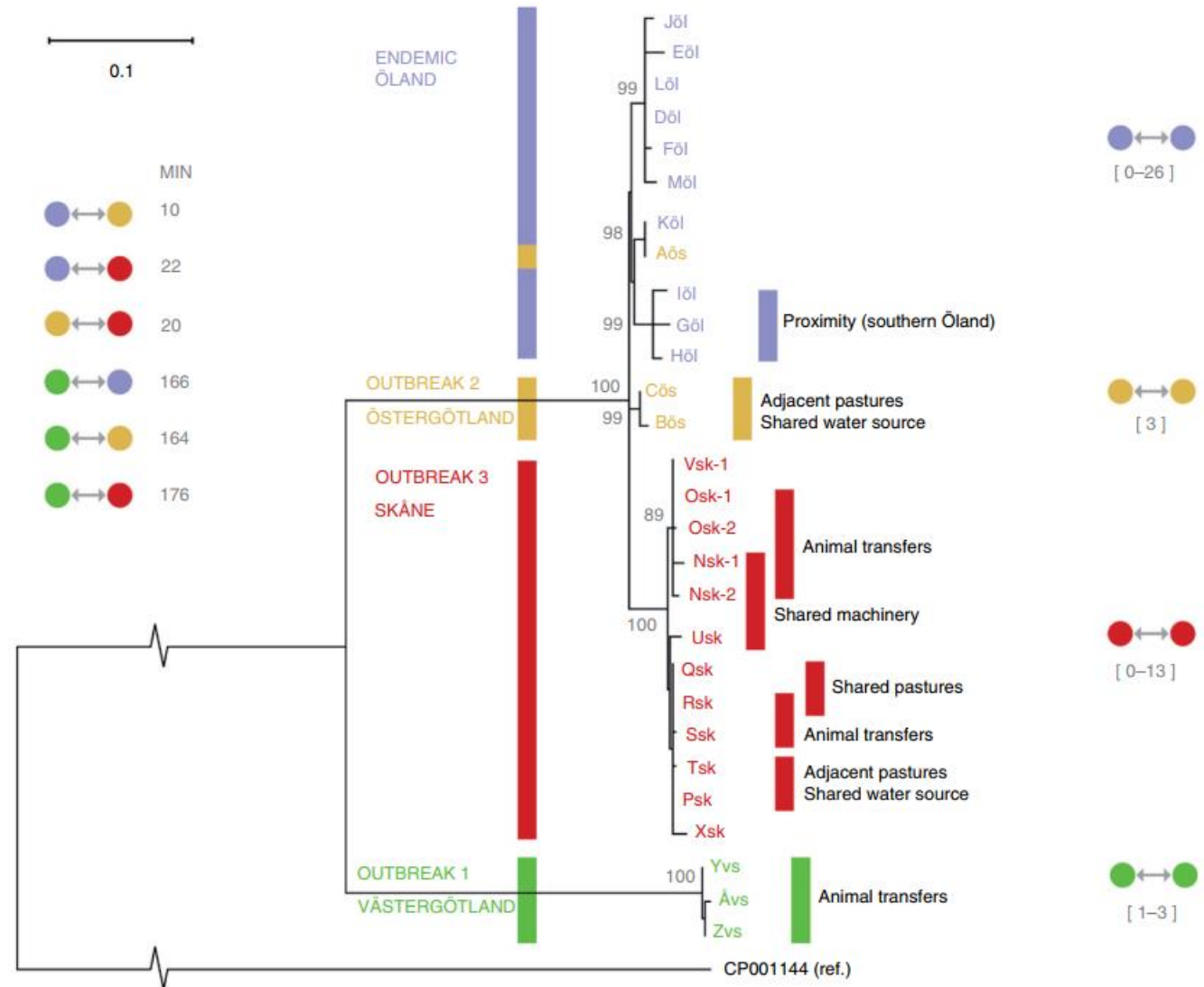
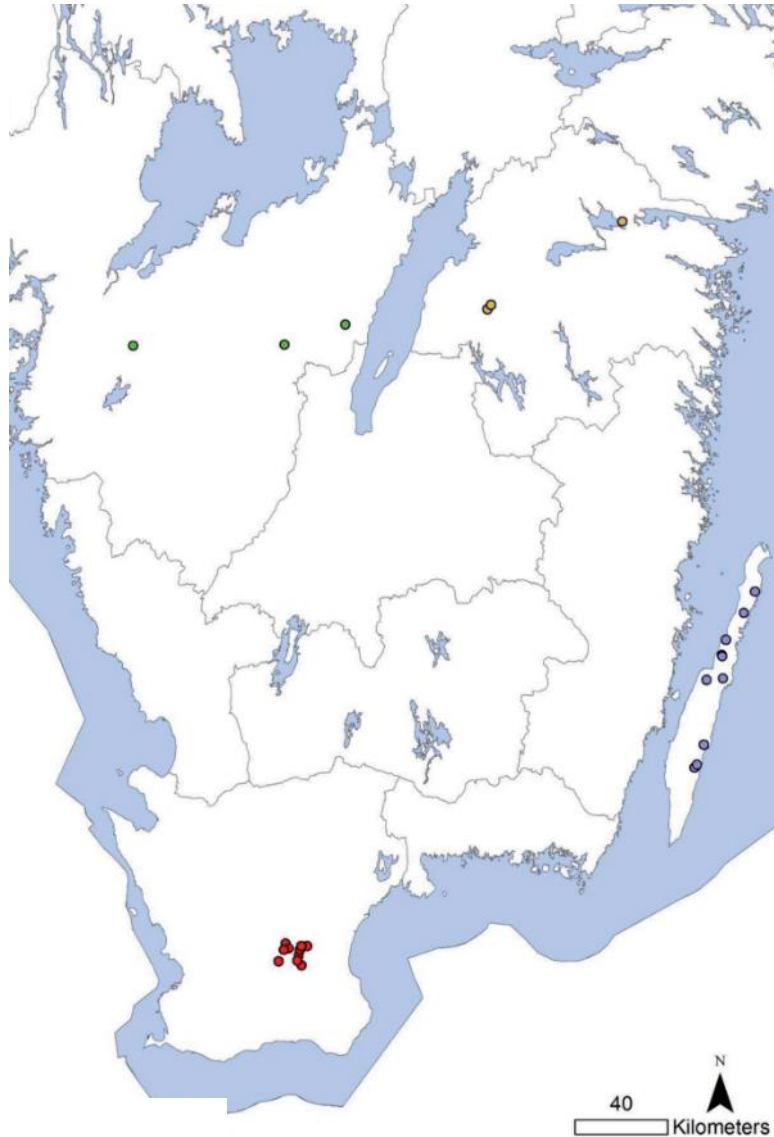
USERS



DECISIONS

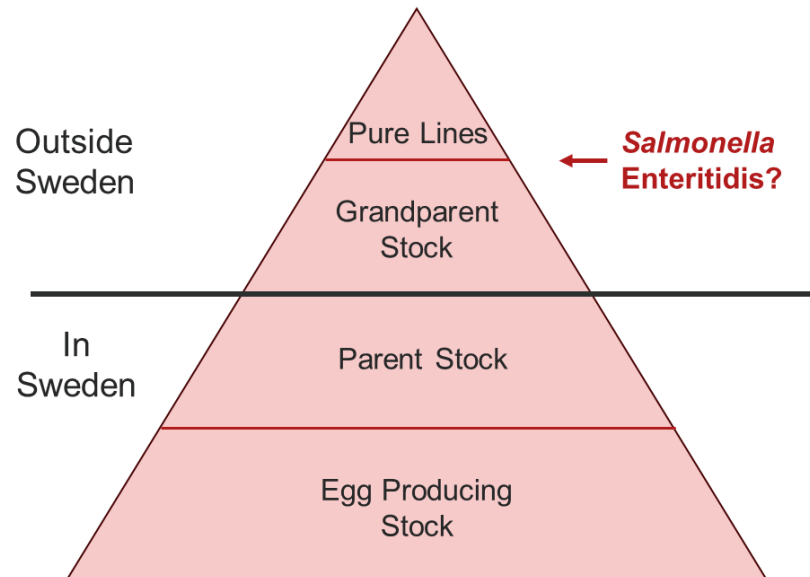


Use of detailed data, whole genome sequencing



Sharing data

Production pyramid in the laying hen industry



The screenshot shows the top of an AP news article. The AP logo is in the top left. The navigation bar includes: WORLD, U.S., ELECTION 2024, POLITICS, SPORTS, ENTERTAINMENT, BUSINESS, SCIENCE, FACT CHECK, ODDITIES, HEALTH. Below the navigation bar are several story highlights: Netflix stock, Trump hush money trial, India votes, Columbia protest, Idaho college murders, and EVEN WH SUPPORT. The article title is 'Sweden's largest egg producer to cull all its chickens following recurrent salmonella outbreaks'. Below the title is a photograph of a long, narrow aisle in a chicken farm, with rows of wire cages on both sides, each containing several chickens. The aisle is brightly lit at the far end.

STOCKHOLM (AP) — Sweden's largest egg producer, which had nearly 1.2 million chickens or 20% of all laying hens in the country before a salmonella outbreak, has been ordered to euthanize all of them so the facility can be fully cleaned.

<https://apnews.com/article/sweden-chicken-farm-salmonella-outbreak-cull-1c718dfbaa8499551a32675057a30861>



Users in the field where data is registered

*"We send all of our treatment data to the Board of Agriculture, and **we get nothing back.** It's like a black hole. I would like to have a dashboard with the data so I can use it for follow-up discussions with the farmer."*

Veterinary practitioner, Sweden.

Data and technology use on farm - farmers' perspective

Several recent and ongoing studies with focus groups, interviews and tool evaluations with farmers.

TABLE 2 Summary of the themes.

Theme	Description
Extending the self	Farmers' concepts of their self-identity extend to the way they manage their animals and the data they produce
Sense of agency	Farmers value their experiential knowledge, affective relations with their animals, and their ability for abductive reasoning
Quantifying animals	Technologies generate new quantitative knowledge about animals' behaviour which forms new norms that animals adhere to at the individual, group, and herd level
Managing human labour	Technology that collects data on farm workers and animals is used as a surveillance technique to manage the workers. It can also facilitate collaboration between people on the farm

From Social and ethical implications of data and technology use on farms: a qualitative study of Swedish dairy and pig farmers
Doidge et al, Frontiers in Veterinary Science 2023

Data use and data sharing – farmers' perspectives

*“What I find most with my data is that it really helps protect your cows and your herd really. ... The best part about being a dairy farmer is the cows and **the cows are basically everything to me** and I will do whatever to make sure that they are the number one really”*

Dairy farmer, UK

This and the following examples come from:

- Doidge et al. Social and ethical implications of data and technology use on farms: a qualitative study of Swedish dairy and pig farmers. *Frontiers in Veterinary Science* 2023
- Doidge et al. A living lab approach to understanding dairy farmers' needs of technologies and data to improve herd health: Focus groups from 6 European countries. *Journal of Dairy Science* 2024.
- Ongoing work in DECIDE

Data use and data sharing - farmers' perspectives

"Here it comes down to the eye, and to somehow combine both what we have written down but also figure it out with a veterinarian ... because there are no clear directions here on what to do."

Pig farmer, Sweden

"I think it's difficult to integrate technology because it depends on your eye for the animals. All of you here know this. Certain things you need to do by hand when pigs are being born and such. It's hard to have a robot for this."

Pig farmer, Sweden

Data use and data sharing - farmers' perspectives

"It's not entirely clear who has access to this information and who should have it. There's a bit of question mark, maybe over who does actually look at this information... and there could be someone analysing it from afar that maybe shouldn't be."

Cattle farmer, Ireland

"You have to be present, and you need to remain focused. To not relax, thinking that technology will solve it all. This will always be a potential danger."

Dairy farmer, Norway

Data use and data sharing - farmers' perspectives

"I don't want this in an app, I want to talk to my vet." Dairy farmer, Sweden

"I feel that half of the data we collect ourselves is useful. ... I feel that a lot of data registered here is completely meaningless considering its value and the actual management." Dairy farmer, Norway

Data use and data sharing - farmers' perspectives

"When I take a bottle or a package of something out of the vets, I don't understand how data can't automatically show up on my end somewhere on some database that it doesn't have to do away with these prescriptions because I think they're just a total nightmare". Cattle farmer, Ireland

"Any management system or technology that you have to switch to always takes a lot of energy and time, so that was unpleasant." Cattle farmer, The Netherlands

"You want everything to talk to each other. 'Agri-cam', 'My Farm'... It's annoying that they [the apps] can't talk to each other. You are drowning with apps." Dairy farmer, Sweden

Data of relevance for veterinary sector?

AMR-data

Antibiotic
usage data

Health records

Population
data

Geographical
information
(GIS)

Biosecurity
and control
programmes

Production
and
reproduction

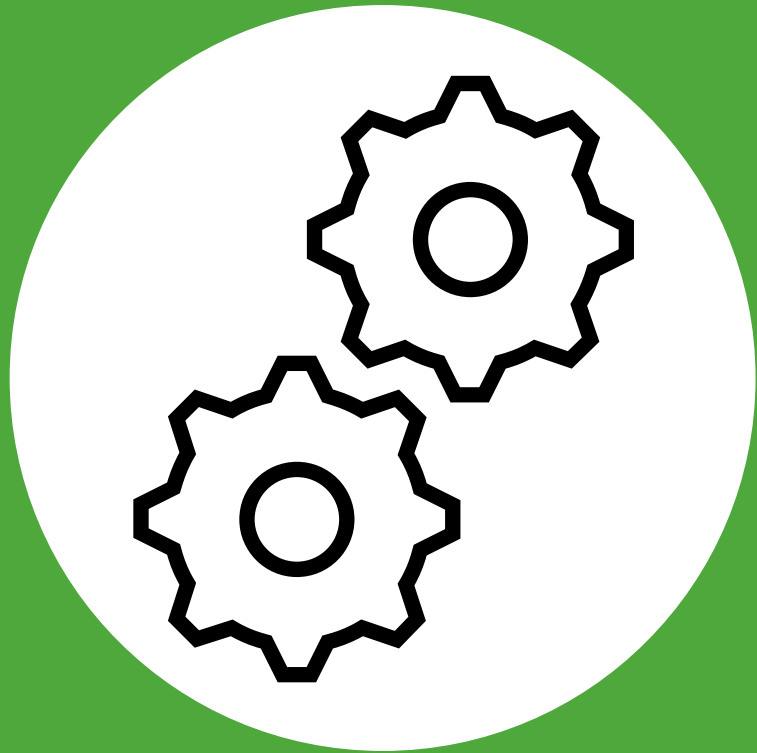
Costs and
consequences

Environment

Wildlife

Vectors

Public health
data



Tools and apps

Animal Health Ireland provides the knowledge, education and coordination required to establish effective control programmes for non-regulated diseases of livestock.

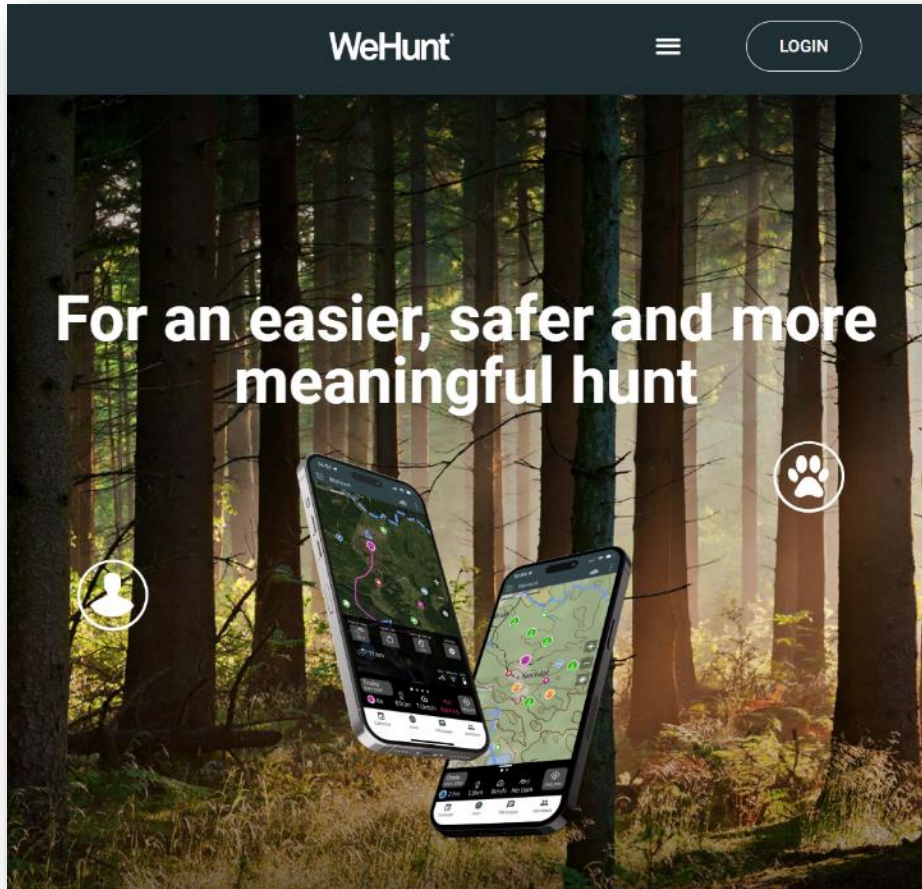
FIND OUT MORE



CATTLE INFORMATION



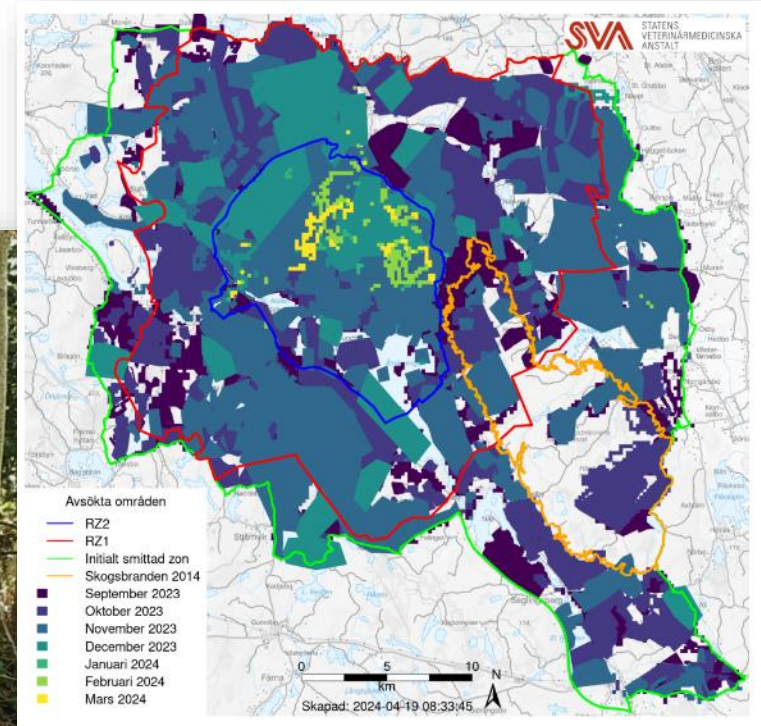
The rough, dirty, smelly, and messy reality



<https://wehunt.app/>



Photo: SVA



ASF: sammanställning fram till 2024-04-22 - Meddelande (HTML)

Arkiv Meddelande Hjälp **Bifogade filer**

Öppna Snabbutskrift Ta bort bifogad fil Spara som Spara alla bifogade filer Ladda upp Ladda upp alla bifogade filer Markera Kopiera alla

Åtgärder Spara på datorn Spara i molnet Markering

ASF: sammanställning fram till 2024-04-22

SVAIT-noreply
Till Ann Lindberg; ASF2023; Cecilia Hultén; Erik Ågren; Erika Chenais; Gunilla Hallgren; Hyeyoung Kim; Jenny Frössling; Karin Olofsson-Sannö; +6 andra

Sammanställning-ASF-utbrottet-2024-04-22.pdf
3 MB

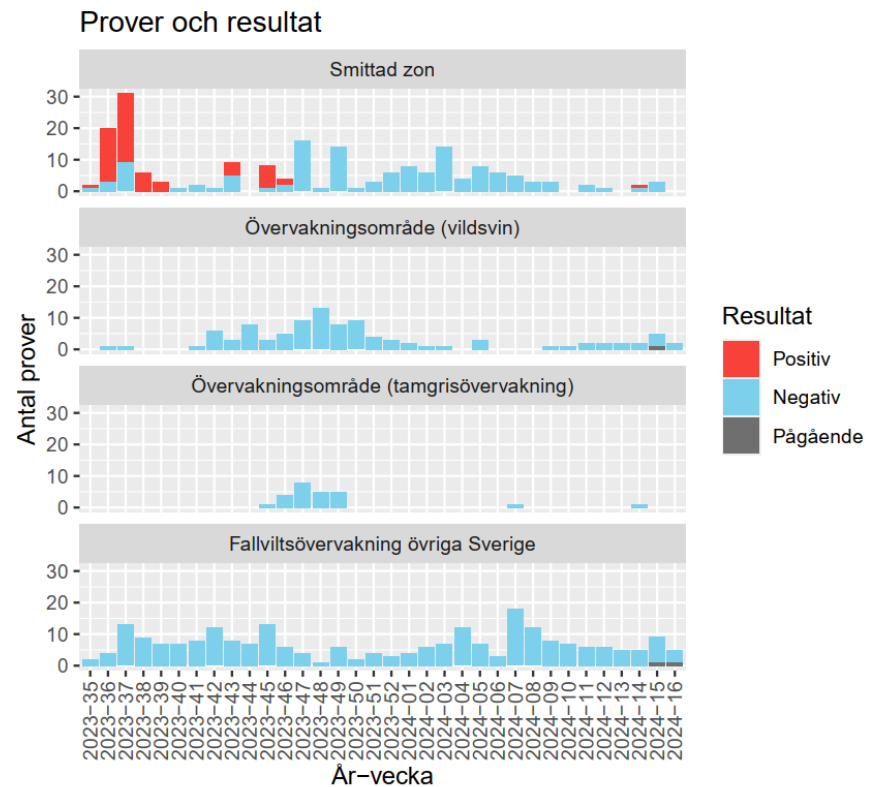
Se senaste sammanställningen i bifogad PDF.

Detta meddelande har skickats automatiskt och går inte att svara på.

Sammanställning av data i ASF-utbrottet

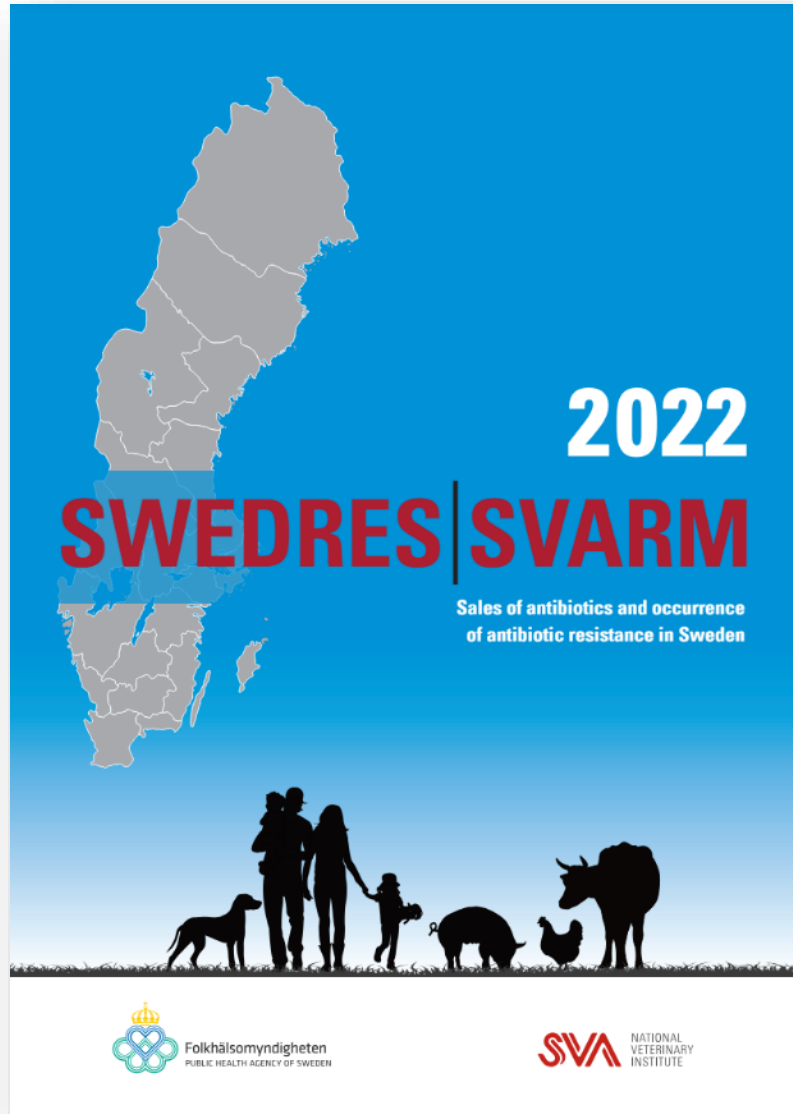
Statens veterinärmedicinska anstalt (SVA)

22 april 2024



Kategori	Positiv	Negativ	Pågående
Kadaver i smittad zon	63	34	0
Avlivning i smittad zon	0	88	0
Trafikskadade i smittad zon	0	8	0

SVARM AMR Surveillance in Sweden



Swedish Veterinary Antimicrobial Resistance Monitoring

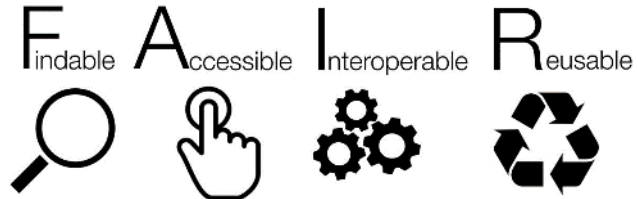
"...follow and analyse the development of antibiotic resistance among microorganisms in animals and food."

Joint report with the Public Health Agency of Sweden

- Human health aspects
- Animal health aspects

- Antibiotic sales
- Antibiotic resistance

SvarmIT



Platform for a real-time visualisation of AMR trends in animals in Sweden

Tool for timely actions - within SVA, clinicians

Expendable workflow written with open-source software

- Bacterial species
- Animal species
- Antibiotics

SvarmIT



SVA STATENS VETERINÄRMEDICINSKA ANSTÄLT Sök Meny

Search Options Svenska

1. Select a type

2. Select a bacterium

3. Select an antibiotic or an animal species

Antibiotic Animal

Graph **Table**

Escherichia coli / Pigs

Year	Ceftazidime (>1mg/L)	Ciprofloxacin (>0.06mg/L)	Chloramphenicol (>16mg/L)	Colistin (>2mg/L)	Clotrimazole (>0.25mg/L)	Clotrimazole (>2mg/L)
2010	0	2	4	1	8	1
2011	0	2	4	1	11	1
2012	0	2	3	1	13	1
2013	0	2	3	1	15	1
2014	0	2	3	1	17	1
2015	0	2	3	1	20	1
2016	0	2	3	1	18	1
2017	0	2	3	1	15	1
2018	0	2	3	1	15	1
2019	0	2	3	1	19	1
2020	0	2	3	1	15	1
2021	0	2	3	1	17	1
2022	0	2	3	1	23	1
2023	0	2	3	1	25	1
2024	0	2	3	1	20	1

Legend:

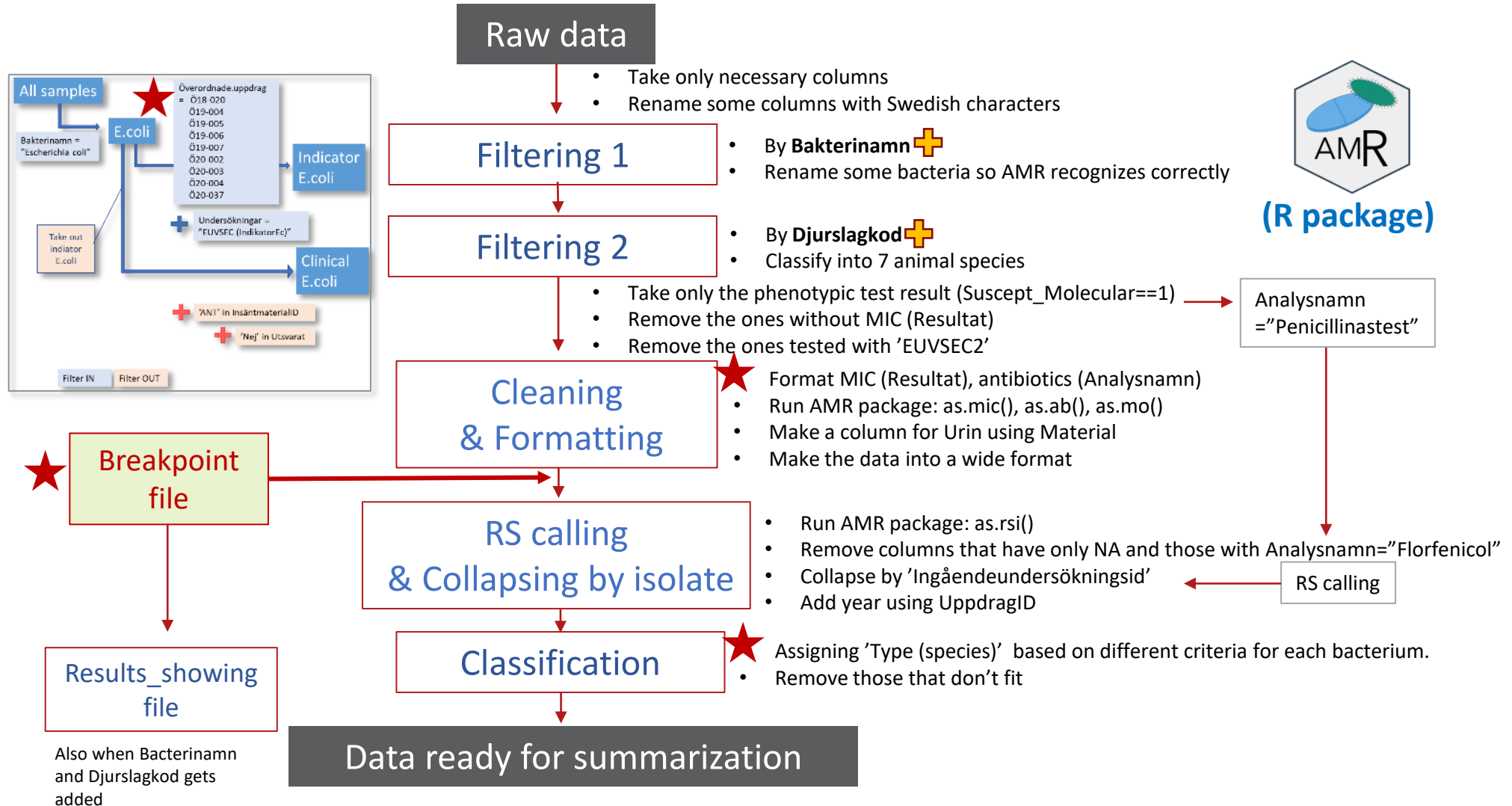
- Ceftazidime (>1mg/L)
- Ciprofloxacin (>0.06mg/L)
- Chloramphenicol (>16mg/L)
- Colistin (>2mg/L)
- Clotrimazole (>0.25mg/L)
- Clotrimazole (>2mg/L)

<https://www.sva.se/en/what-we-do/antibiotics/svarm-resistance-monitoring/svarmit-interactive-resistance-monitoring-tool/>



SvarmIT

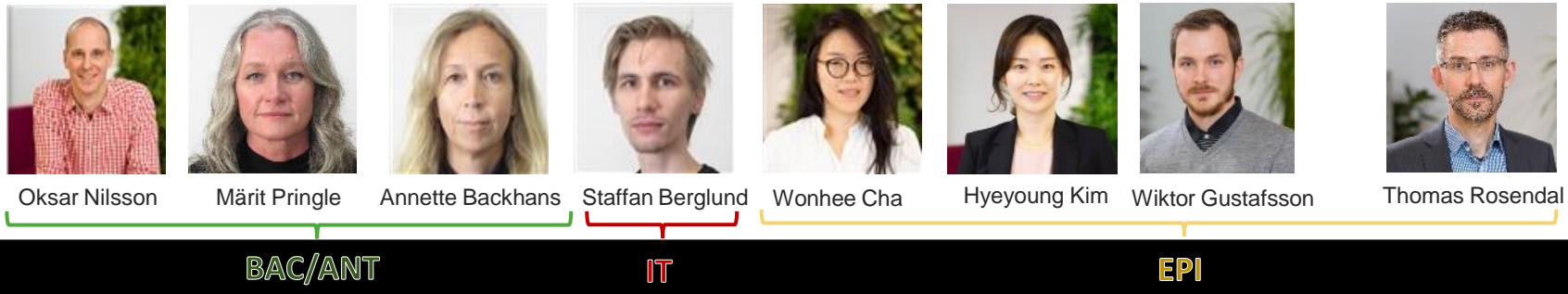
Behind the scene...



SvarmIT

<Challenges & Lessons>

- People with different expertise



- Continuous quality assurance – script (data input, data structure), pipeline breakpoints (guidelines & regulations)
- Good communication & collaboration with the lab
- Communication with stakeholders - veterinarians, Swedish board of agriculture, Public Health Agency of Sweden, other clinical labs, international parties



**Thank you
for your
attention!**

jenny.frossling@sva.se

Photo: SVA

